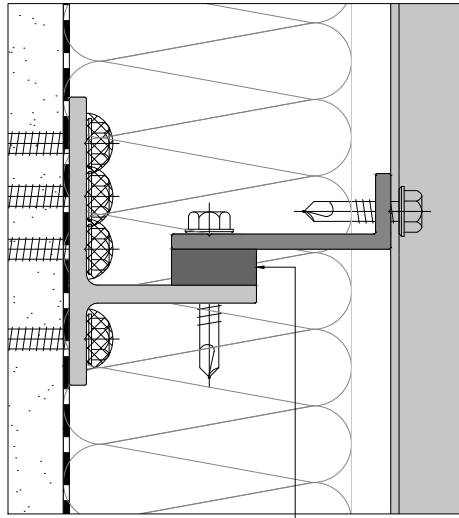
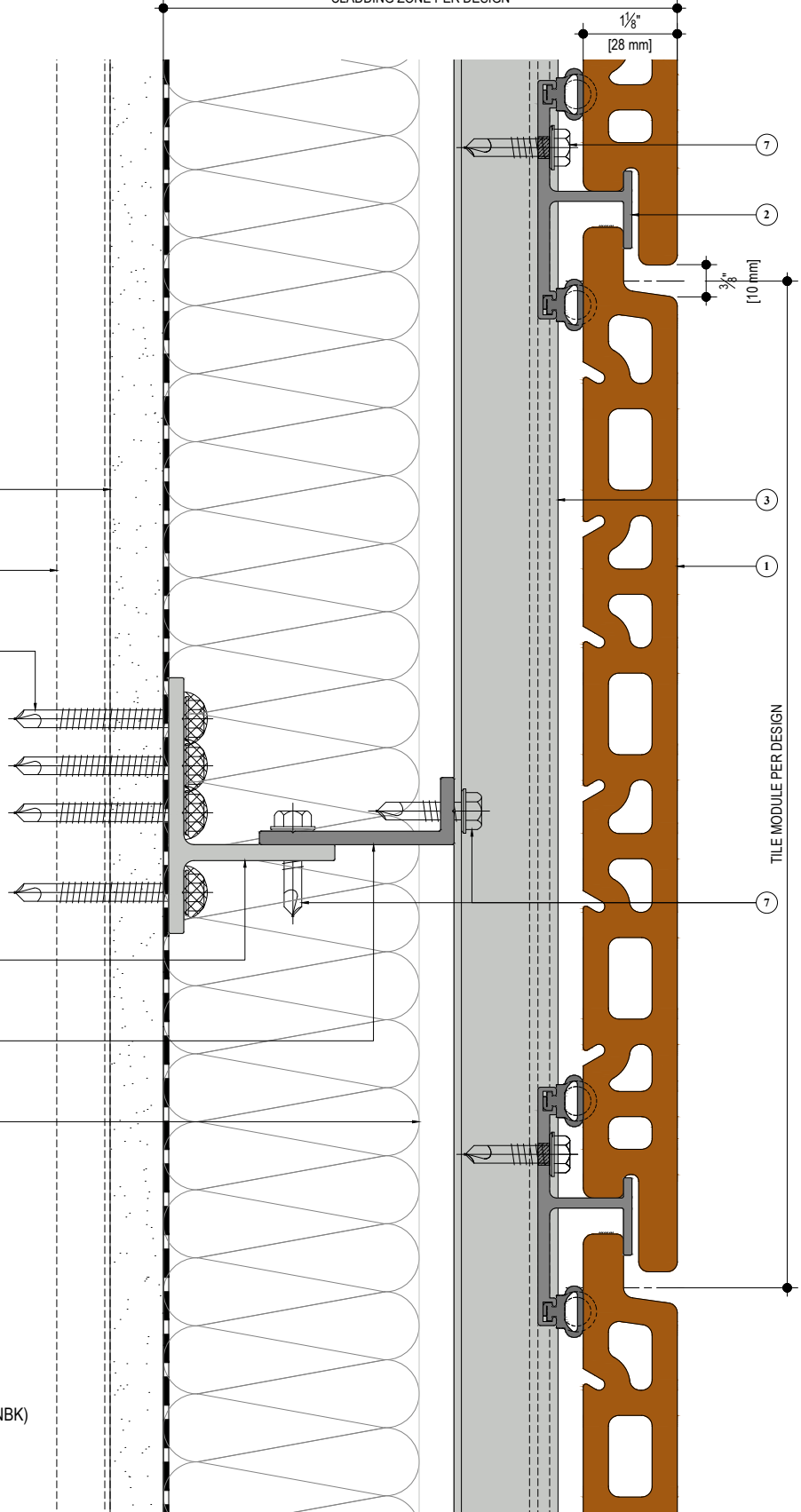


**OPTIONAL THERMAL ISOLATOR**



17

CLADDING ZONE PER DESIGN



TILE MODULE PER DESIGN

- ① 28mm thick NBK terracotta tile
- ② CLP30 NBK extruded clip
- ③ VTS30/VTS31 Alum. extruded carrier track
- ④ SGA - Alum. extruded subgirt-angle
- ⑤ SG - Alum. extruded sub-girt 24"
- ⑦ 1/4"-14 x 1" HWH S.S. Bi Flex or similar (Not by NBK)
- ⑧ Insulation per design
- ⑨ 5/8" GYP. Board sheathing with air & vapor barrier membrane (Not by NBK)
- ⑩ Vertical steel stud framing, min. 16 ga@ 16" centers (Not by NBK)
- ⑪ 1/4"-14 x 2" HWH S.S. Bi Flex or approved equal (Not by NBK)
- ⑰ Thermal isolator (Optional)

SYSTEM: **TERRART 28**

DETAIL: **STANDARD STUDWALL DETAIL**

DETAIL NUMBER: **NBK-HS-28-04**

TILE DIRECTION: **HORIZONTAL**

DRAWING REFERENCE: **VERTICAL SECTION**

SCALE: **1:2**

**NBK** | ARCHITECTURAL TERRACOTTA  
A Hunter Douglas Company

**NBK North America**

10 Federal Street, Second Floor  
Salem, MA 01970  
Telephone: +1 (781) 639 2662  
www.nbkterracotta.com